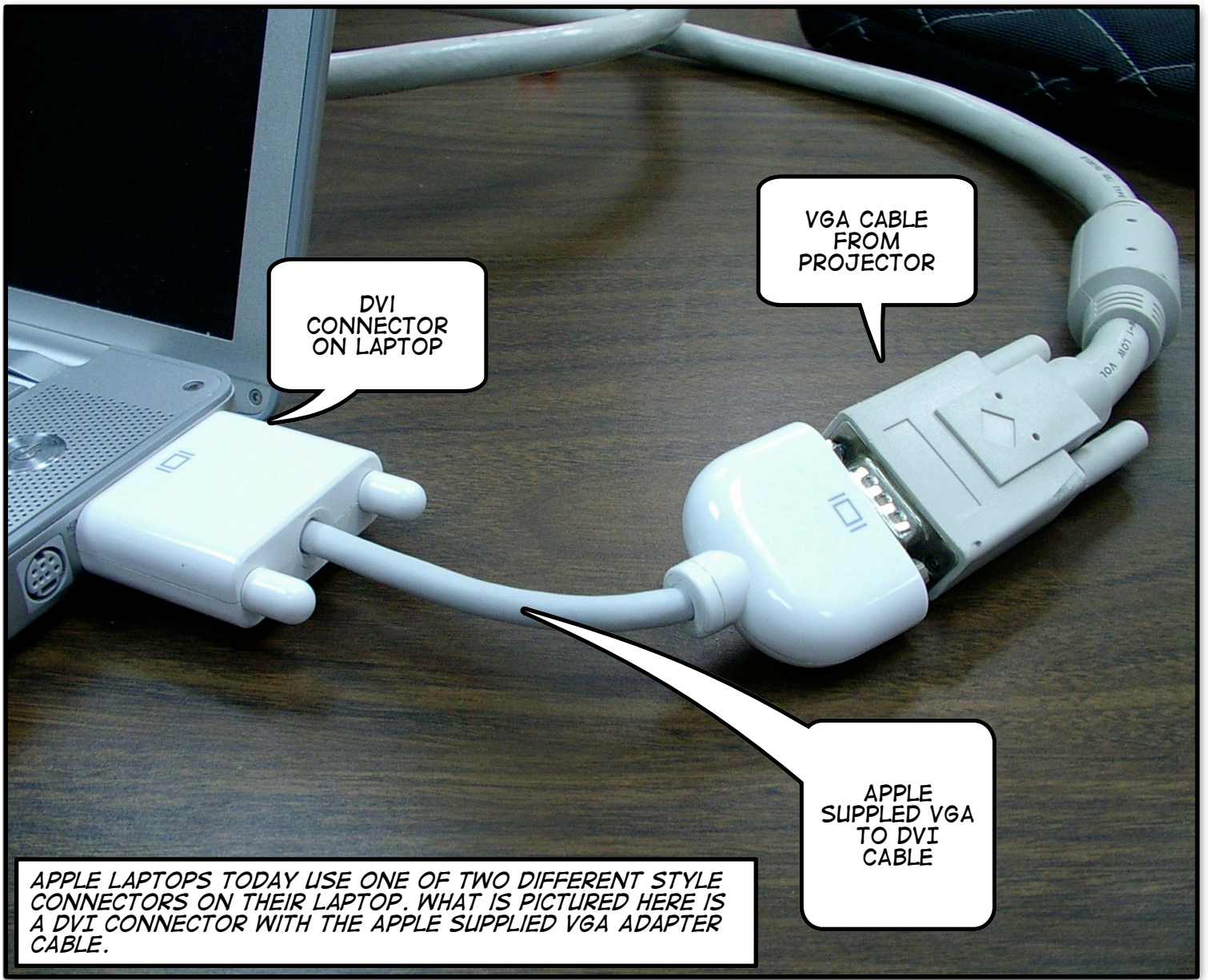


How to Use Your Mac Laptop With a Projector!

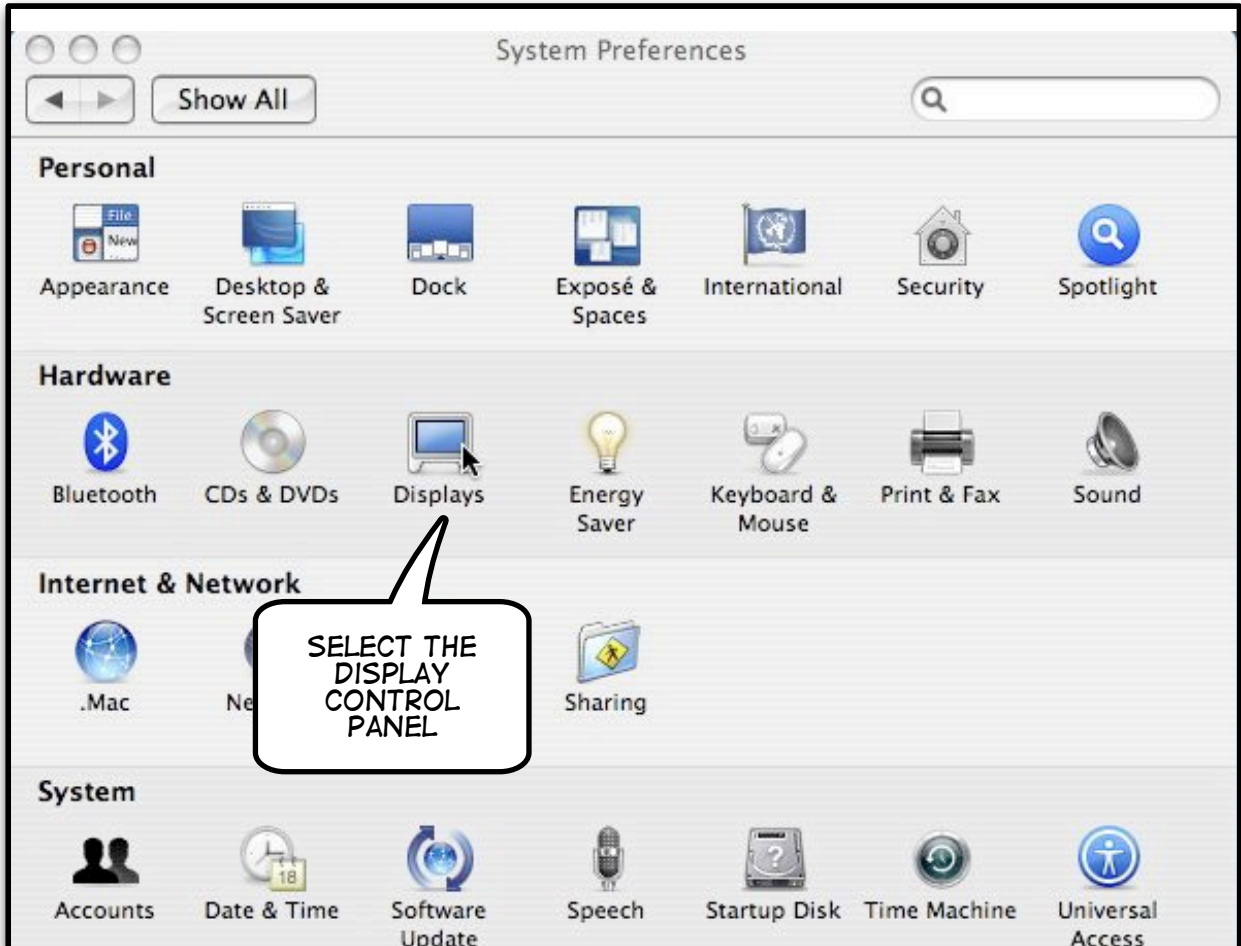
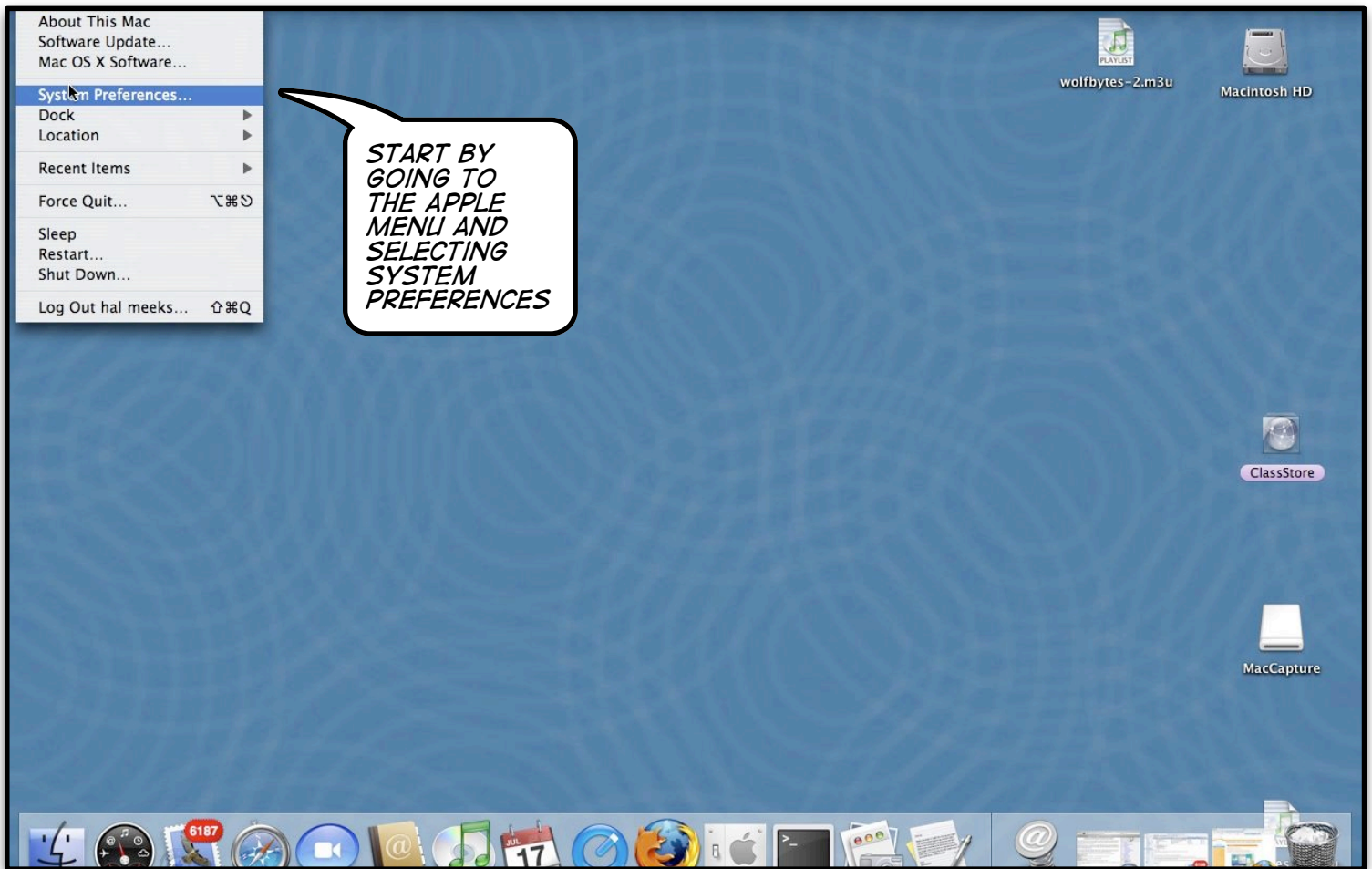


DVI CONNECTOR ON LAPTOP

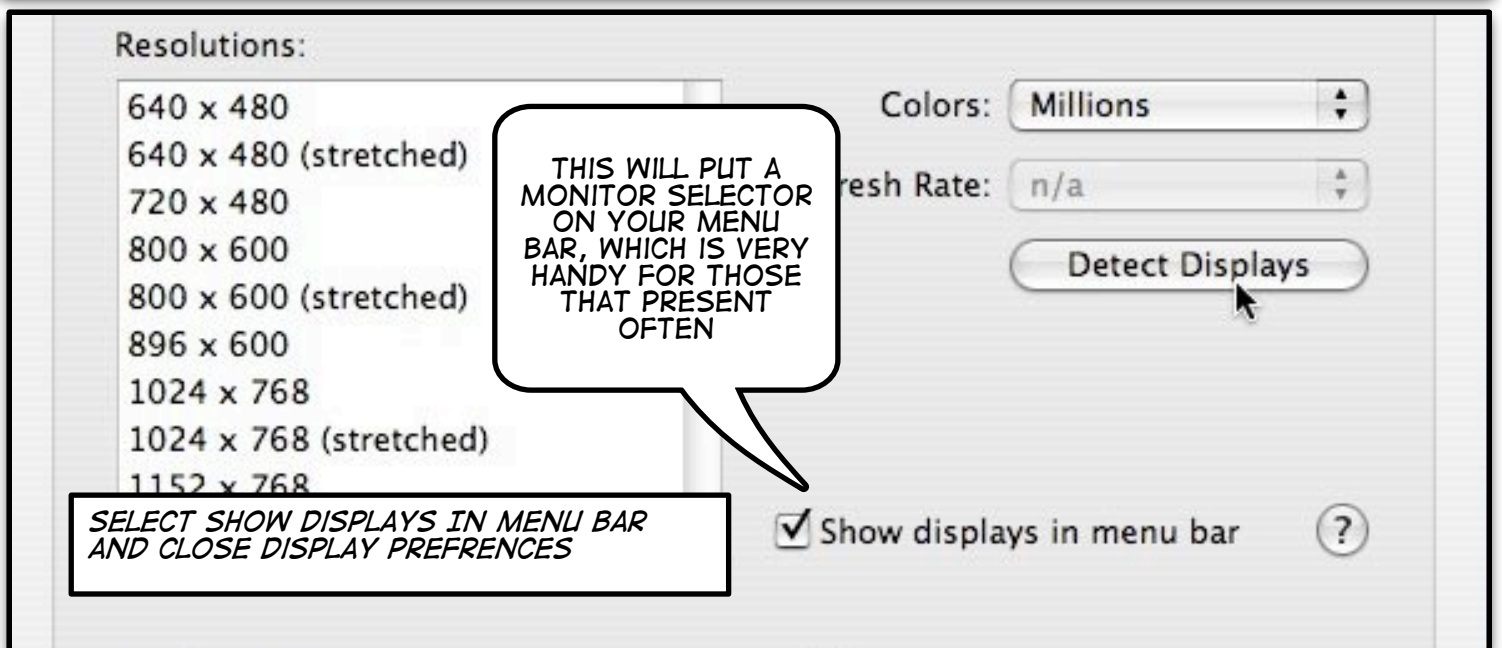
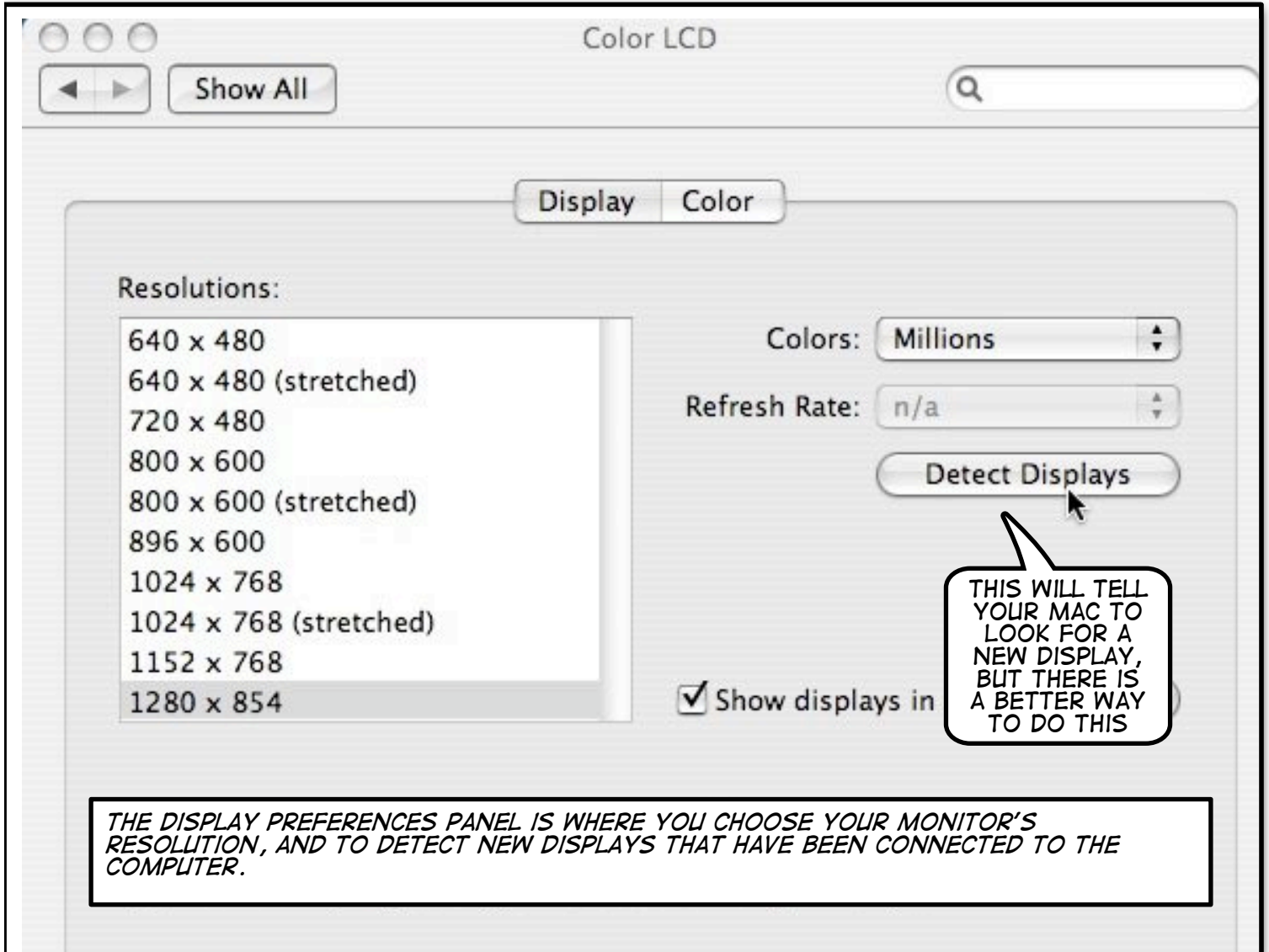
VGA CABLE FROM PROJECTOR

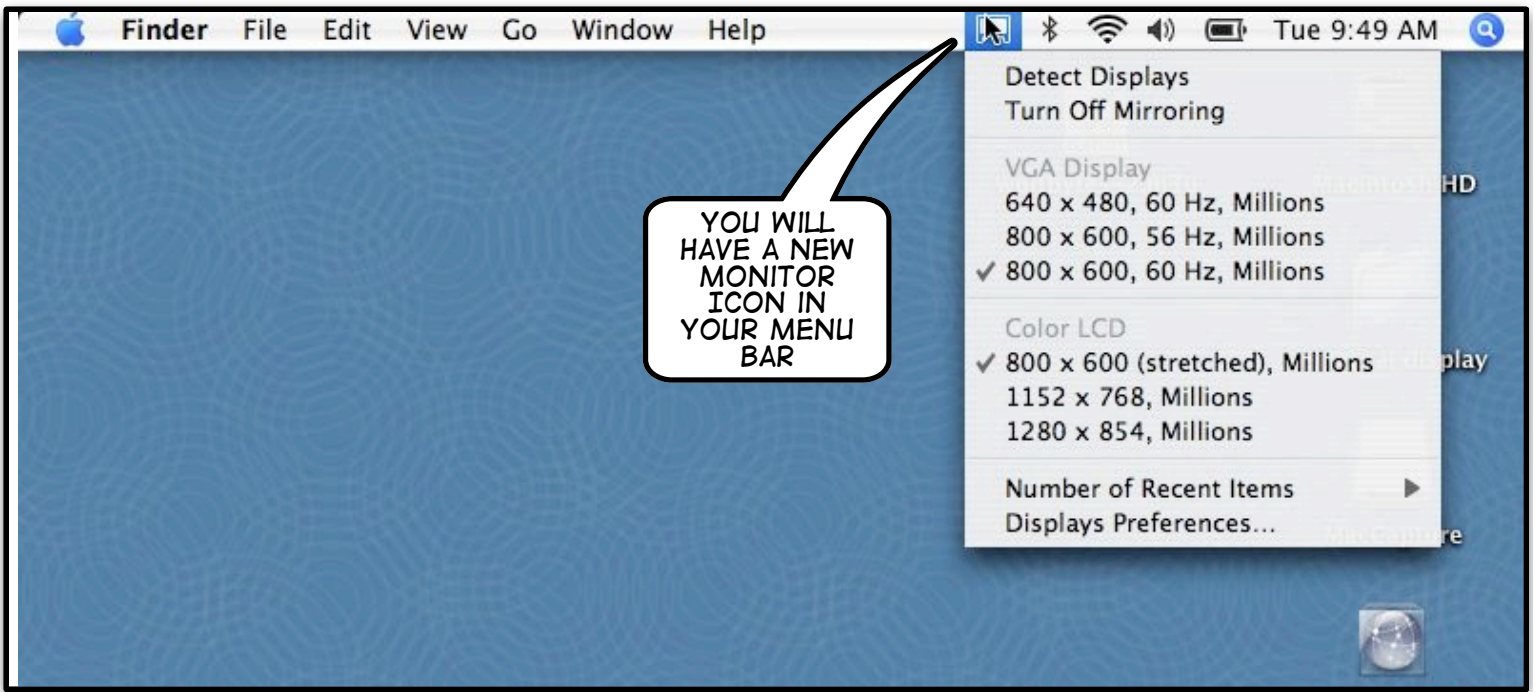
APPLE SUPPLIED VGA TO DVI CABLE

APPLE LAPTOPS TODAY USE ONE OF TWO DIFFERENT STYLE CONNECTORS ON THEIR LAPTOP. WHAT IS PICTURED HERE IS A DVI CONNECTOR WITH THE APPLE SUPPLIED VGA ADAPTER CABLE.

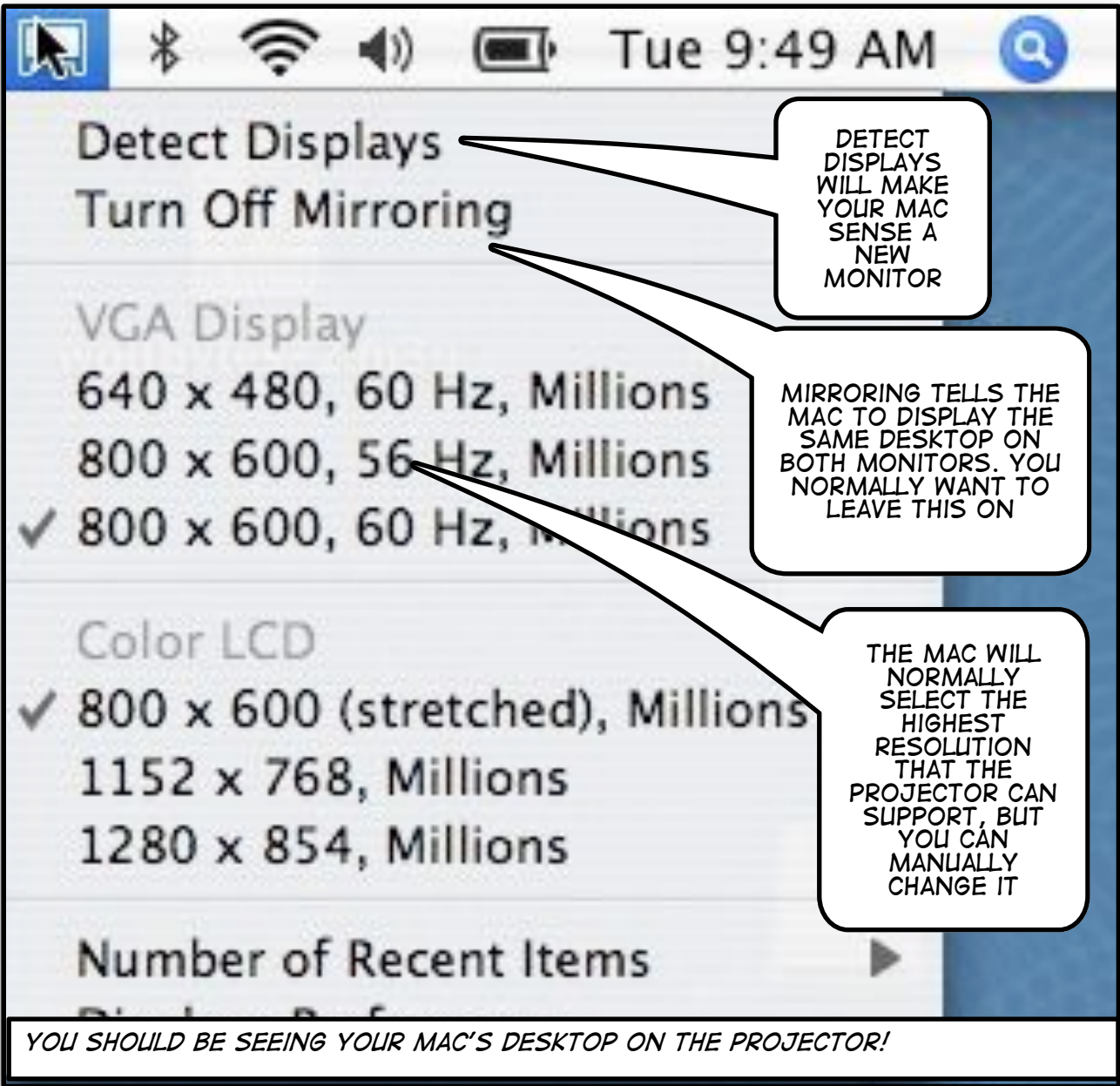


Before Proceeding Any Further Ensure that the Projector is On





YOU WILL HAVE A NEW MONITOR ICON IN YOUR MENU BAR



DETECT DISPLAYS WILL MAKE YOUR MAC SENSE A NEW MONITOR

MIRRORING TELLS THE MAC TO DISPLAY THE SAME DESKTOP ON BOTH MONITORS. YOU NORMALLY WANT TO LEAVE THIS ON

THE MAC WILL NORMALLY SELECT THE HIGHEST RESOLUTION THAT THE PROJECTOR CAN SUPPORT, BUT YOU CAN MANUALLY CHANGE IT

YOU SHOULD BE SEEING YOUR MAC'S DESKTOP ON THE PROJECTOR!